



a service of the Metropolitan Council

metrotransit.org/facts
612-373-3333

/MetroTransitMN
 @MetroTransitMN
 @MetroTransitMN

Brian Lamb, General Manager

METRO TRANSIT FACTS

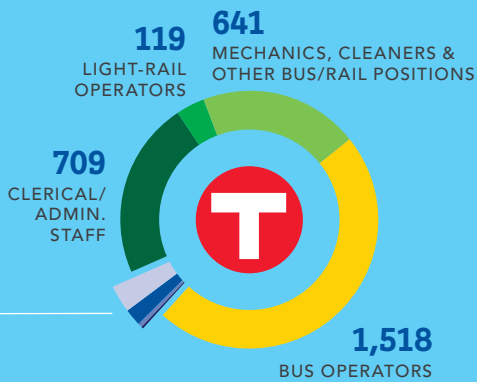
THROUGH DEC. 31, 2016

09-01-01-17

OUR PEOPLE

We at Metro Transit deliver environmentally sustainable transportation choices that link people, jobs and community conveniently, consistently and safely.

3,193
TOTAL EMPLOYEES



Transit Police: keeping customers, employees and facilities safe

114 FULL-TIME OFFICERS
71 PART-TIME OFFICERS
14 ADMIN. STAFF
7 COMM. SERV. OFFICERS

RAPID BUS SERVICE DEBUTS

Metro Transit's first rapid bus line, the A Line, opened in June 2016. The A Line provides faster, more frequent service along Snelling Avenue, Ford Parkway and 46th Street, connecting the METRO Green and Blue lines and several other destinations. Trips run every 10 minutes most of the day, and service is sped up through a combination of off-board fare payments, transit signal priority and limited stops. A Line stations also have real-time displays, ticket vending machines and other amenities. Unique buses allow customers to board and exit out either door. Learn more at metrotransit.org/a-line.



829,999	TOTAL RIDES
4,521	AVERAGE WEEKDAY RIDERSHIP
93%	ON-TIME PERFORMANCE
20	STATIONS
12	BUSES

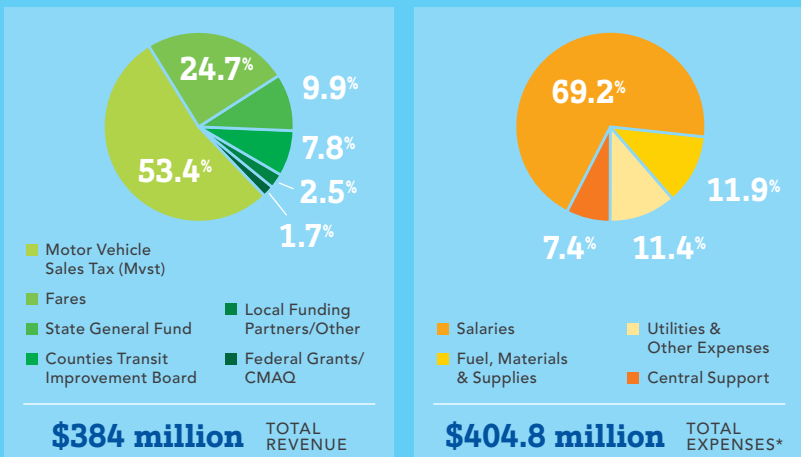
FARE INCENTIVE PROGRAMS FOR SCHOOLS & EMPLOYERS

METROPASS	U-PASS	COLLEGE PASS	STUDENT PASS
12.3 million RIDES	4.1 million RIDES	2.0 million RIDES	4.2 million RIDES
36,091 PASSES IN USE	19,061 PASSES IN USE	5,820 PASSES IN USE	10,282 PASSES IN USE
333 PARTICIPATING EMPLOYERS	ONLY OFFERED AT UNIVERSITY OF MINNESOTA	37 PARTICIPATING COLLEGES	52 PARTICIPATING HIGH SCHOOLS

ENGAGING WITH CUSTOMERS

1 million TRIPS PLANNED BY PHONE (612-373-3333)	
5.6 million TRIPS PLANNED AT METROTRANSIT.ORG	
10,629 APP DOWNLOADS	
142,914 RIDER ALERT SUBSCRIBERS	
279 HOW TO RIDE PRESENTATIONS	
84,246 CUSTOMER RELATIONS CONTACTS	

OPERATING REVENUE & EXPENSES



*Includes a planned use of reserves in accordance with the Metropolitan Council's Revenue Allocation Policy

LOST & FOUND

25,105 ITEMS PROCESSED

5,182 ITEMS RETURNED

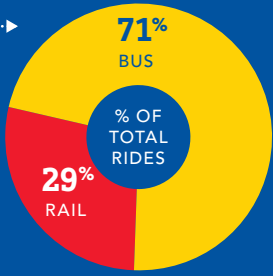
82.6 million RIDES

907 SQ. MILES

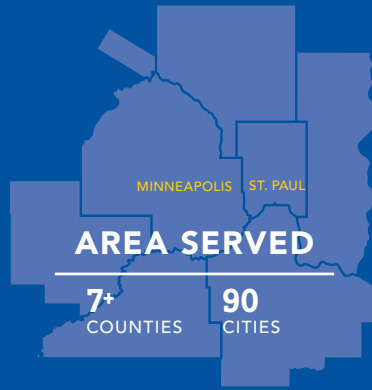
131 ROUTES

266,916 AVERAGE WEEKDAY RIDERSHIP

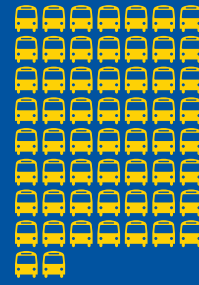
58.9 million RIDES



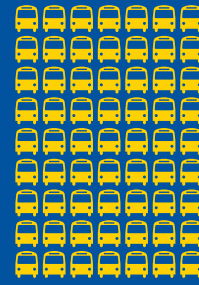
23.7 million RIDES



58 URBAN LOCAL



63* EXPRESS



7 SUBURBAN LOCAL



2 LIGHT RAIL

1 COMMUTER RAIL

* Includes Maple Grove Transit routes operated by Metro Transit



517 40-FOOT DIESEL BUSES



134 HYBRID-ELECTRIC BUSES



12 A LINE BUSES



64 COACH BUSES



175 60-FOOT ARTICULATED BUSES



199,179 AVG. WEEKDAY BOARDINGS



24 TRANSIT CENTERS

12,412 BUS STOPS

950+ BUS SHELTERS



86% BUS ON-TIME PERFORMANCE



2,401,074 TOTAL VEHICLE HOURS OF SERVICE



7,915 AVG. VEHICLE MILES BETWEEN SERVICE CALL



66 PARK & RIDE LOTS/RAMPS (BUS-ONLY)

15,774 PARK & RIDE SPACES (BUS-ONLY)

300+ MILES OF BUS-ONLY SHOULDER



27 BOMBARDIER LIGHT-RAIL VEHICLES



59 SIEMENS LIGHT-RAIL VEHICLES

BLUE LINE

30,337

GREEN LINE

39,386

AVG. WEEKDAY BOARDINGS



84% BLUE LINE ON-TIME PERFORMANCE



82% GREEN LINE ON-TIME PERFORMANCE



2,671 BLUE LINE PARK & RIDE SPACES



26,496 AVG. VEHICLE MILES BETWEEN SERVICE CALL



5 SHARED STATIONS

14 BLUE LINE STATIONS

18 GREEN LINE STATIONS



6 COMMUTER RAIL LOCOMOTIVES



18 COMMUTER RAIL CARS



93% COMMUTER RAIL ON-TIME PERFORMANCE



3,280 PARK & RIDE SPACES



48,921 AVG. VEHICLE MILES BETWEEN VEHICLE FAILURE



45,838 RIDESHARE ACCOUNTS



534 AVERAGE VANPOOL USERS



11,421 GUARANTEED RIDE HOME REGISTRANTS



3,578 AVERAGE MONTHLY CARPOOL PARTICIPANTS



1.6 million TOTAL VANPOOL MILES



2,534 AVG. WEEKDAY BOARDINGS



200 BIKE LOCKERS



ALL BUSES AND TRAINS HAVE BIKE RACKS



1,331 BIKE PARKING SPACES



7 STATIONS