



metrotransit.org/facts  
612-373-3333

f /MetroTransitMN  
@MetroTransitMN  
@MetroTransitMN

Brian Lamb, General Manager

09-01-01-16

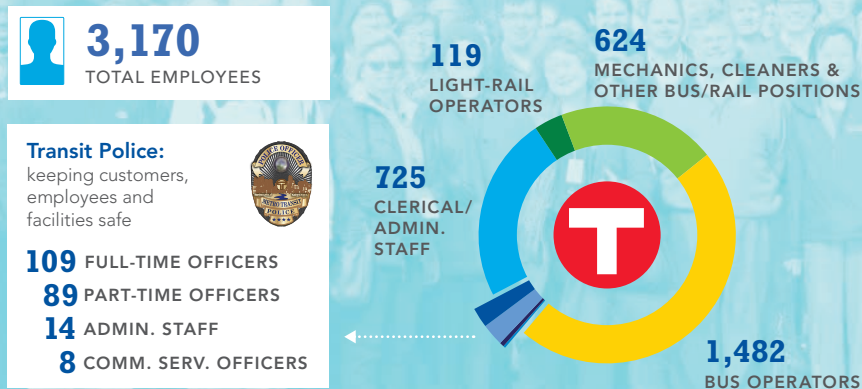
# METRO TRANSIT FACTS

THROUGH DEC. 31, 2015



## OUR PEOPLE

We at Metro Transit deliver environmentally sustainable transportation choices that link people, jobs and community conveniently, consistently and safely.

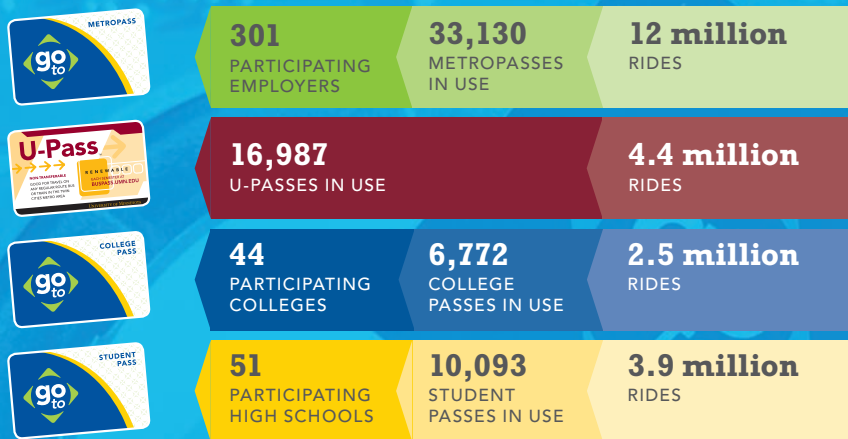


## BUS STOP IMPROVEMENTS

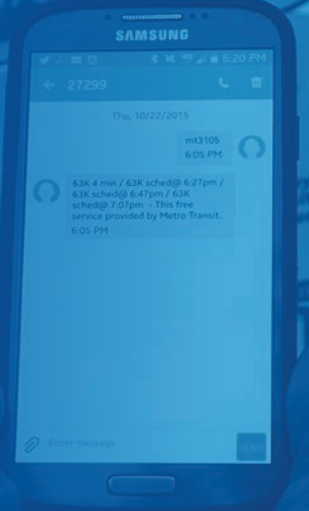
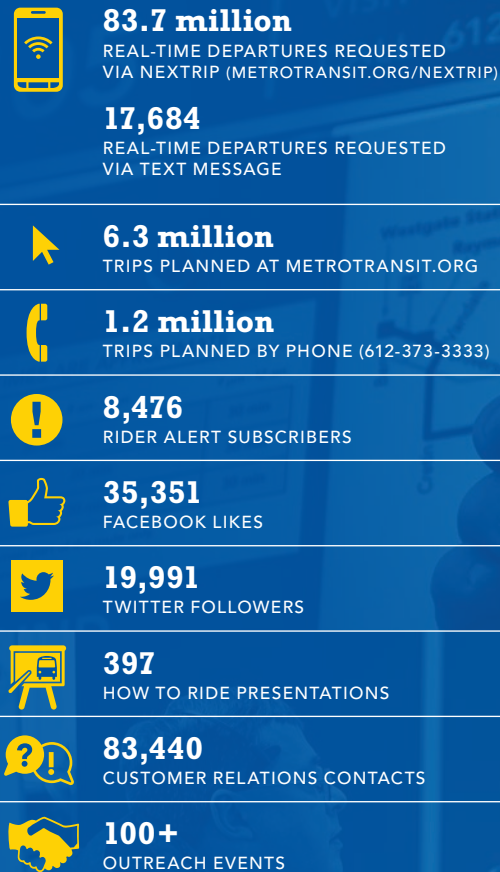
Metro Transit is committed to providing a safe, secure and comfortable experience at its bus stops, and to providing customers the information they need to plan trips in real-time. In 2015, Metro Transit installed 100 new and replacement waiting shelters, many with heat and light. In addition, 2,300 bus stop signs were replaced with a new design that includes route, map and NexTrip information. Bus stop improvements will continue in 2016 and beyond. Learn more at [metrotransit.org/better-bus-stops](http://metrotransit.org/better-bus-stops).



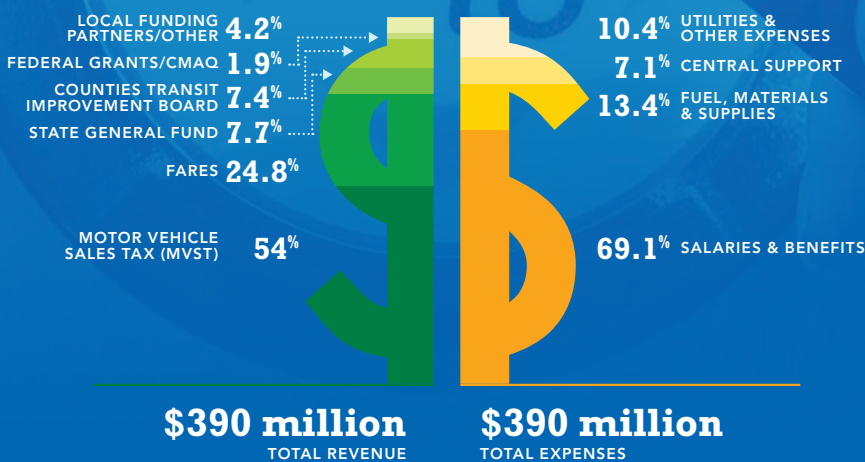
## FARE INCENTIVE PROGRAMS FOR SCHOOLS & EMPLOYERS



## ENGAGING WITH CUSTOMERS

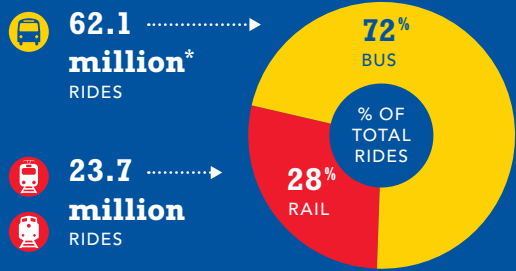


## OPERATING REVENUE & EXPENSES



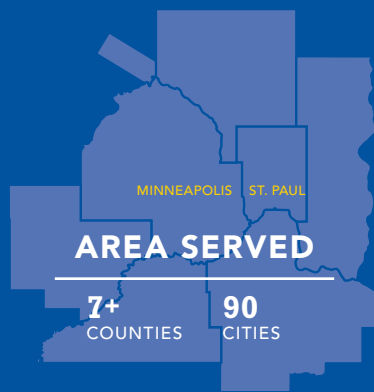
**85.8 million RIDES**

**276,408** AVERAGE WEEKDAY RIDERSHIP

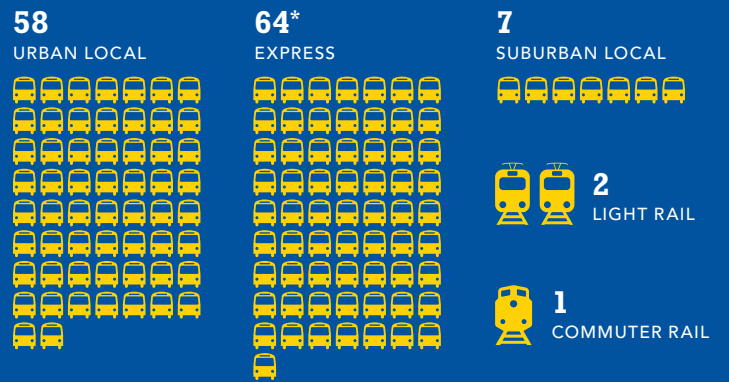


\* Includes 837,335 rides provided on Maple Grove Transit routes operated by Metro Transit

**907 SQ. MILES**

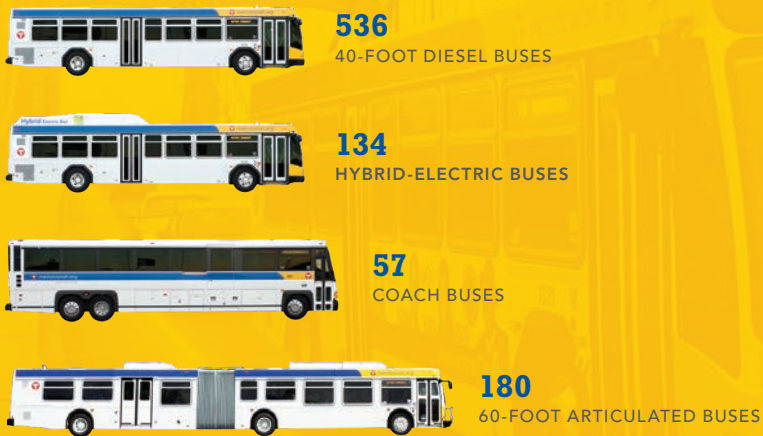


**132 ROUTES**



\* Includes Maple Grove Transit routes operated by Metro Transit

**BUS**



**24** TRANSIT CENTERS

**12,508** BUS STOPS

**900+** BUS SHELTERS

**204,986** AVG. BUS WEEKDAY BOARDINGS



**300+** MILES OF BUS-ONLY SHOULDER

**87%** BUS ON-TIME PERFORMANCE

**2,359,892** TOTAL VEHICLE HOURS OF SERVICE

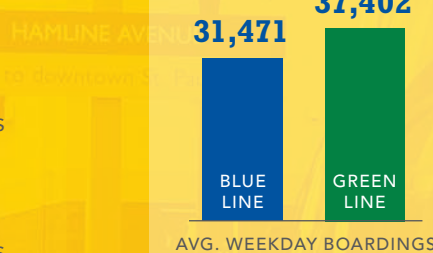
**7,510** AVG. VEHICLE MILES BETWEEN SERVICE CALL



**65** PARK & RIDE LOTS/RAMPS (BUS-ONLY)

**15,592** PARK & RIDE SPACES (BUS-ONLY)

**METRO BLUE LINE AND GREEN LINE**



**86%** BLUE LINE ON-TIME PERFORMANCE

**2,456** BLUE LINE PARK & RIDE SPACES

**82%** GREEN LINE ON-TIME PERFORMANCE

**39,114** AVG. VEHICLE MILES BETWEEN SERVICE CALL



**5** SHARED STATIONS

**14** BLUE LINE STATIONS

**18** GREEN LINE STATIONS

**NORTHSTAR COMMUTER RAIL**



**6** COMMUTER RAIL LOCOMOTIVES  
**18** COMMUTER RAIL CARS

**7** STATIONS  
**2,548** AVG. WEEKDAY BOARDINGS

**RIDESHARE**

**41,433** RIDESHARE ACCOUNTS

**550** AVERAGE VANPOOL USERS

**5,658** AVERAGE MONTHLY CARPOOL PARTICIPANTS

**1.6 million** TOTAL VANPOOL MILES

**10,539** GUARANTEED RIDE HOME REGISTRANTS

**96%** COMMUTER RAIL ON-TIME PERFORMANCE

**3,132** PARK & RIDE SPACES

**27,320** AVG. VEHICLE MILES BETWEEN VEHICLE FAILURE

**BIKE**

**200** BIKE LOCKERS

**ALL** BUSES AND TRAINS HAVE BIKE RACKS

**1,331** BIKE PARKING SPACES